

The MyDSL Package System

Submitted by clivesay from the DSL forums

The MyDSL system is a package management system developed specifically for DSL. Members of the user community have developed many software packages that are geared specifically to work with DSL via a 'click & load' method. This package management system was designed for the liveCD or Frugal install DSL users. If you use this method with a regular hard drive install you are doing so at your own risk. Some of these packages may break your system. If you have a regular hard drive install it is recommended you use the standard debian apt repositories to install your software. These packages can be found in the repositories that are linked on the DSL main page.

There you will find two links:

1. Browse the MyDSL repository - This contains software packages that have been tested by the user community and have been determined safe to install into your DSL system.
2. Repository Testing area - These are newly submitted packages by DSL users. They are considered experimental and need testing and feedback from the community before being moved into the regular repository.

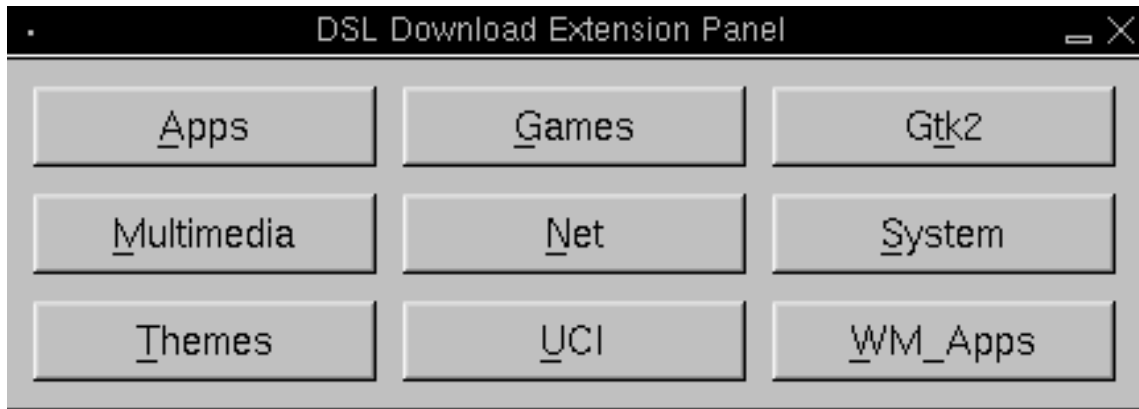
In this howto we will illustrate the following:

1. How to install a package via the MyDSL desktop icon.
2. How to install a package manually using wget and EmelfM

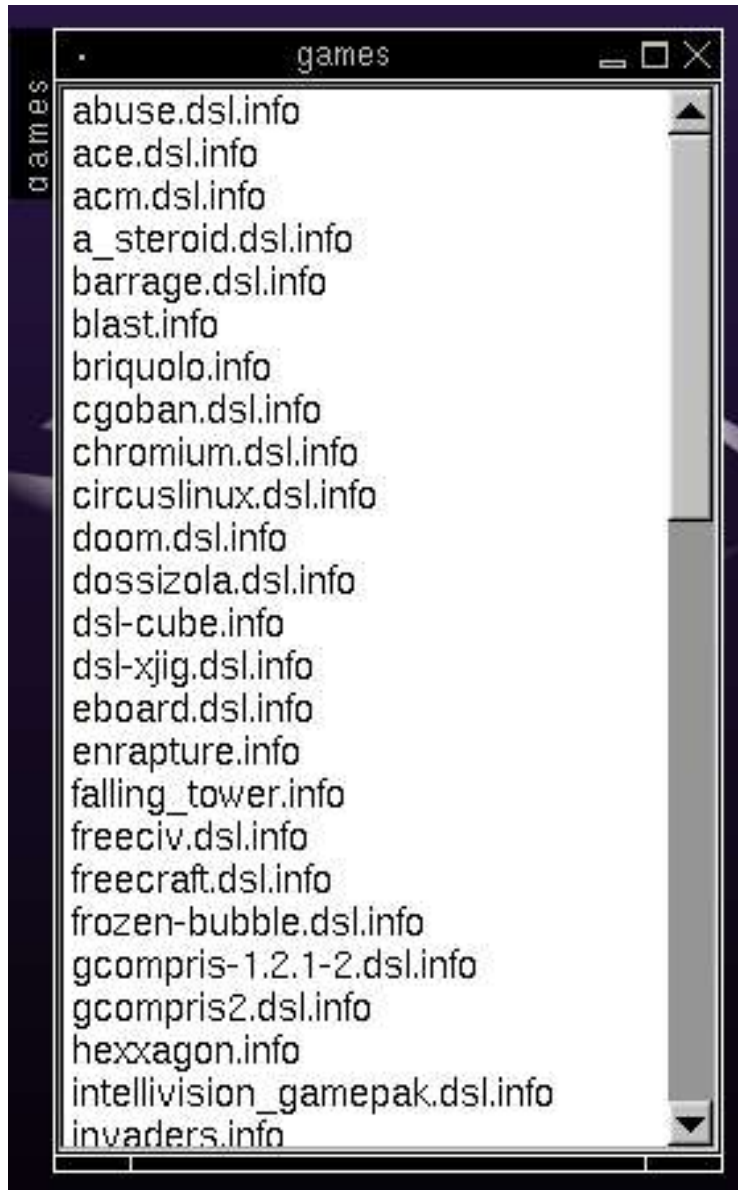
USING THE MyDSL DESKTOP ICON



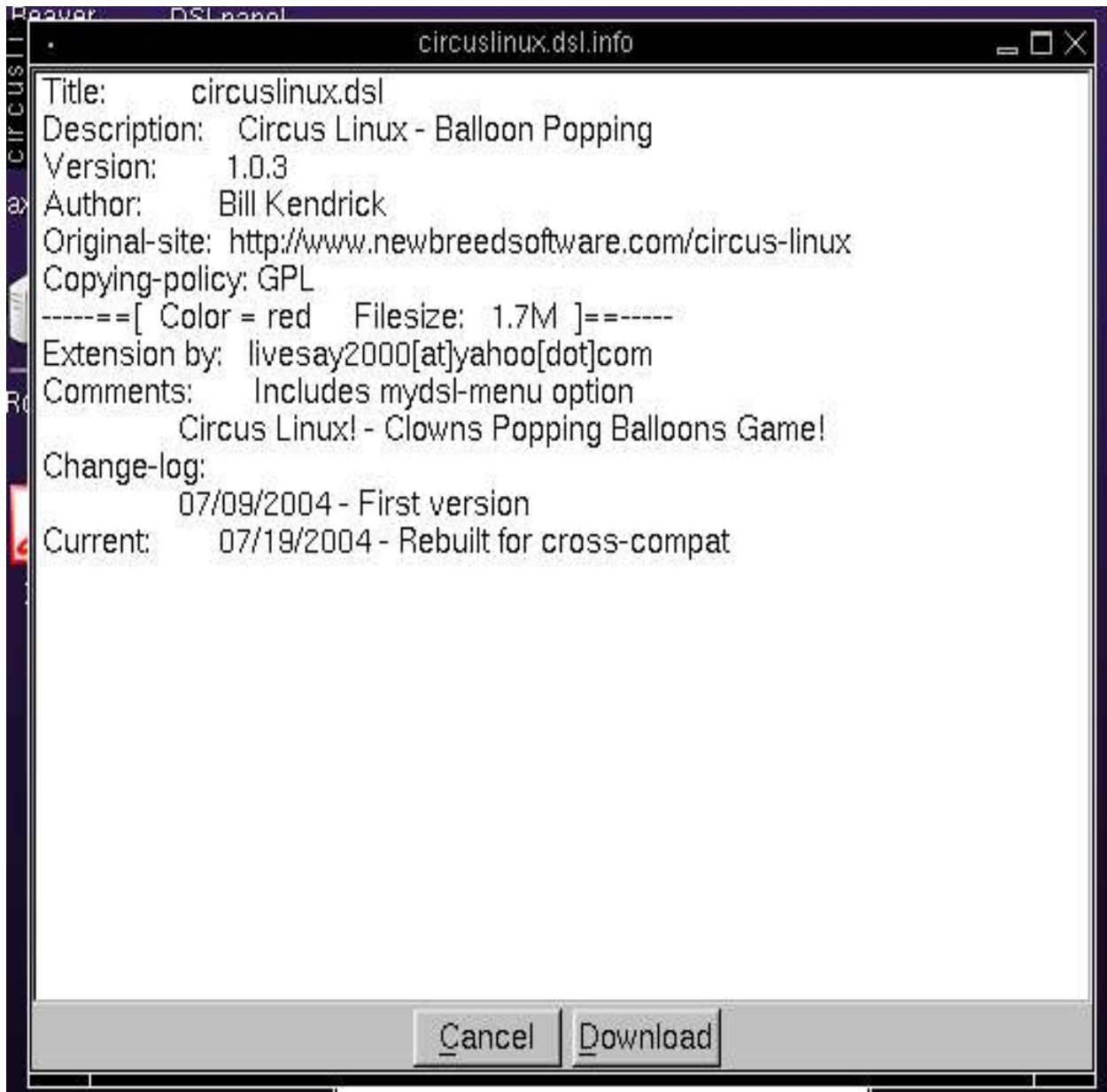
Double click on the MyDSL icon located on you desktop to bring up the MyDSL package management graphical user interface.



The *DSL Download Extension Panel* gives you software categories to choose from. For this example, click on the *Games* category to choose an application.

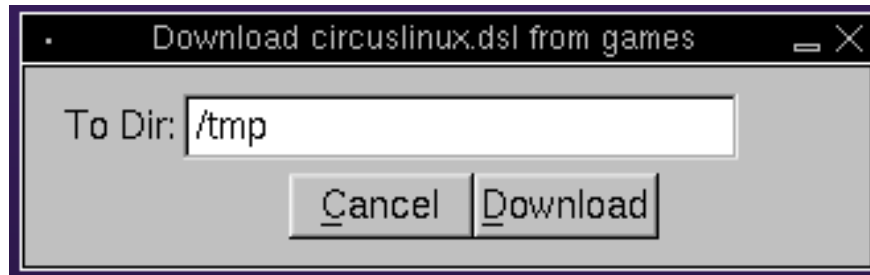


You now have a list of all the applications that are available under the *Games* category of the repository. As you can see, each file ends with the extension `.info`. These files are actually text files which contain information about the version and author of the application as well as important information about other software that may need to be installed for this game to run successfully in DSL. For this example, let's install the *circuslinux.dsl* game. Click on the *circuslinux.dsl.info* file to view the details.

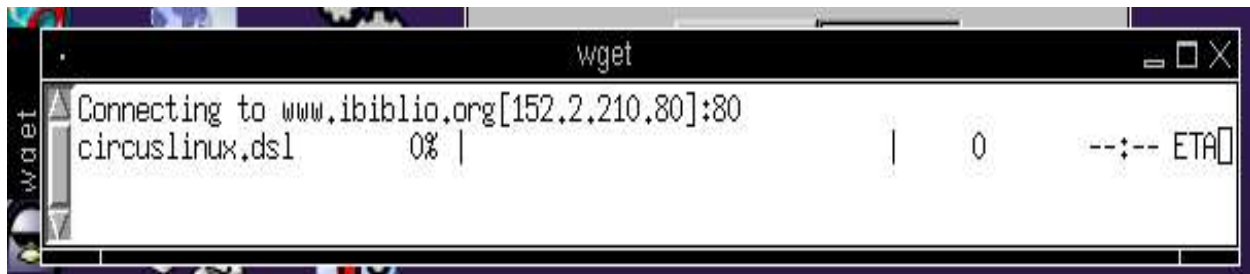


Here we can see all the info about this package. It is important to always look in the "Comments" section to see if there are any other software packages that need to be installed for circuslinux to work. In this case, there are no other packages needed.

Now we are ready to install this game. Click on the *Download* button to start the download and installation process.



Here you are asked what directory you want the application to be downloaded into before it is installed on your system. The file will be placed in the selected directory and will be checked against the md5sum number to ensure that the download was not corrupted. If you receive a bad file, a checksum error will appear. You will need to try and download the package again. It is usually desirable to go ahead and use the default /tmp directory. Click the *Download* button.



You will see a wget progress bar that will show you the status of the download. If the process bar disappears after it reaches 100% then your package should be installed and ready to use! If there was a problem, you will see the checksum popup box as mentioned earlier.

Lets go back to the desktop and bring up the system menu to see if our new application is ready to go. You may not have an entry in the menu if you installed a *System* application that does not need a startup menu item.



Here we see our new game in the myDSL menu entry.



Great!!

Now let's look at installing an application without the MyDSL icon. You would use this if you wanted to try out an application in the Testing area.

USING WGET AND EMELFM FOR THE TESTING REPOSITORY

As mentioned before, some experimental applications are located in the testing repository. They are not located in the MyDSL icon system so we will need to install them manually. For this example, we will use Dillo to get the MyDSL application. You can use Firefox for the downloading if you like. We will use Dillo and wget for this example since many people may not have machines that run Firefox effectively.

Click on the Testing Area link on the main DSL website.



The screenshot shows a web browser window displaying the DSL website. At the top, there are three large, semi-transparent buttons labeled "Live CD", "Installable", and "Expandable". Below these is a horizontal navigation bar with links: [Index](#) - [Applications](#) - [Packages](#) - [Download](#) - [Notes](#) - [Off Site](#) - [Milestones](#) - [Documentation](#) - [Talk](#) - [For](#). In the center, there is a vertical menu with the following items: "The DSL Mini-ITX store", "Support Damn Small Linux, buy a CD!", "Or, Damn Small on a bootable 128MB **USB** pen drive", "Or, run DSL inside Windows from a 128MB **USB** pen drive", "Burn your own? You can make a donation.", "Just FYI, The DSL News Center, Archive", "ideas on OS and fundraising", and "DSL DialUp \$7.95/Month". Below the menu, there are two more links: [Browse The myDSL repository.](#) - [Or The Testing Area.](#) At the bottom, there is a blue text line: "current version 1.0.1!!! Congrats everyone who helped put this together!" and a bolded heading: "What is Damn Small Linux aka DSL?"

Date	Author	Description	Version	Size	Download Link
2005/03/28	clacker	computing and graphics)	2.0.1	15M	R.tar.gz
2005/03/23	SaidinUnleashed	Ultima 4-5-6 for DosBox	1.0	3.1M	Ultima-AOE.tar.gz
2005/03/23	SaidinUnleashed	Ultima 1-2-3 for DosBox	1.0	372K	Ultima-AOD.tar.gz
2005/03/20	Joat_Mone	WMBubble Dock App	1.46-1	20K	wmbubble.dsl
2005/03/20	Joat_Mone	WM3D Cube Dock App	0.98-6	24K	wmcube.dsl
2005/03/15	clivesay	UNIX file management suite	2.5.2	4.7M	endeavour2.dsl
2005/03/14	clacker	Economic and Transport Simulation Game	0.84.16.4	2.0M	simutrans.uci
2005/03/13	Coma	Wave recorder for X	0.6	88K	xwave.dsl
2005/03/12	SaidinUnleashed	Bittorrent p2p client	3.4.2	2.1M	bittorrent-cli.dsl
2005/03/12	friedgold	Virtual Keyboard	2.6	104K	xvkbd.tar.gz
2005/03/12	cbagger01	Purple Fusion DSL XMMS Skin	0	104K	fusion.dsl.xmms.skin.tar
2005/03/11	SaidinUnleashed	Openoffice Office Suite Requires 384M RAM	1.1.4	75M	openoffice-1.1.4.tar.gz
2005/03/10	reidar	Text-based genealogy software	3.0.10-3	220K	lifelines.dsl

Here are the list of applications in the testing area. There are no categories. Everything is listed by the date submitted. For this example we will grab the *endeavour2.dsl* package.

Right click on the *endeavour.dsl* file to bring up the dillo menu. We will want to choose the option "Copy Link location".

NOTE:

The "Save Link As" option is also usable. Sometimes that option will cause problems with the download so we will stick with the wget method.

Now you want to open the desktop menu and choose "XShells -> Root Access". This will bring up a root exterm window. At the prompt, type in *wget* and then a space. After the space, either click on your center button, scrollwheel or both buttons at once (if you have a two button mouse). This is the way you paste in Linux. Your screen should look like the following:

A terminal window titled "Bash" with standard window controls (minimize, maximize, close) in the top right corner. The terminal prompt is "root@box:~#" and the command "wget http://www.ibiblio.org/pub/Linux/distributions/damnsmall/mydsl_testing/endeavour2.dsl" has been entered. A yellow cursor is positioned at the end of the command line.

```
Bash
root@box:~# wget http://www.ibiblio.org/pub/Linux/distributions/damnsmall/mydsl_testing/endeavour2.dsl
```

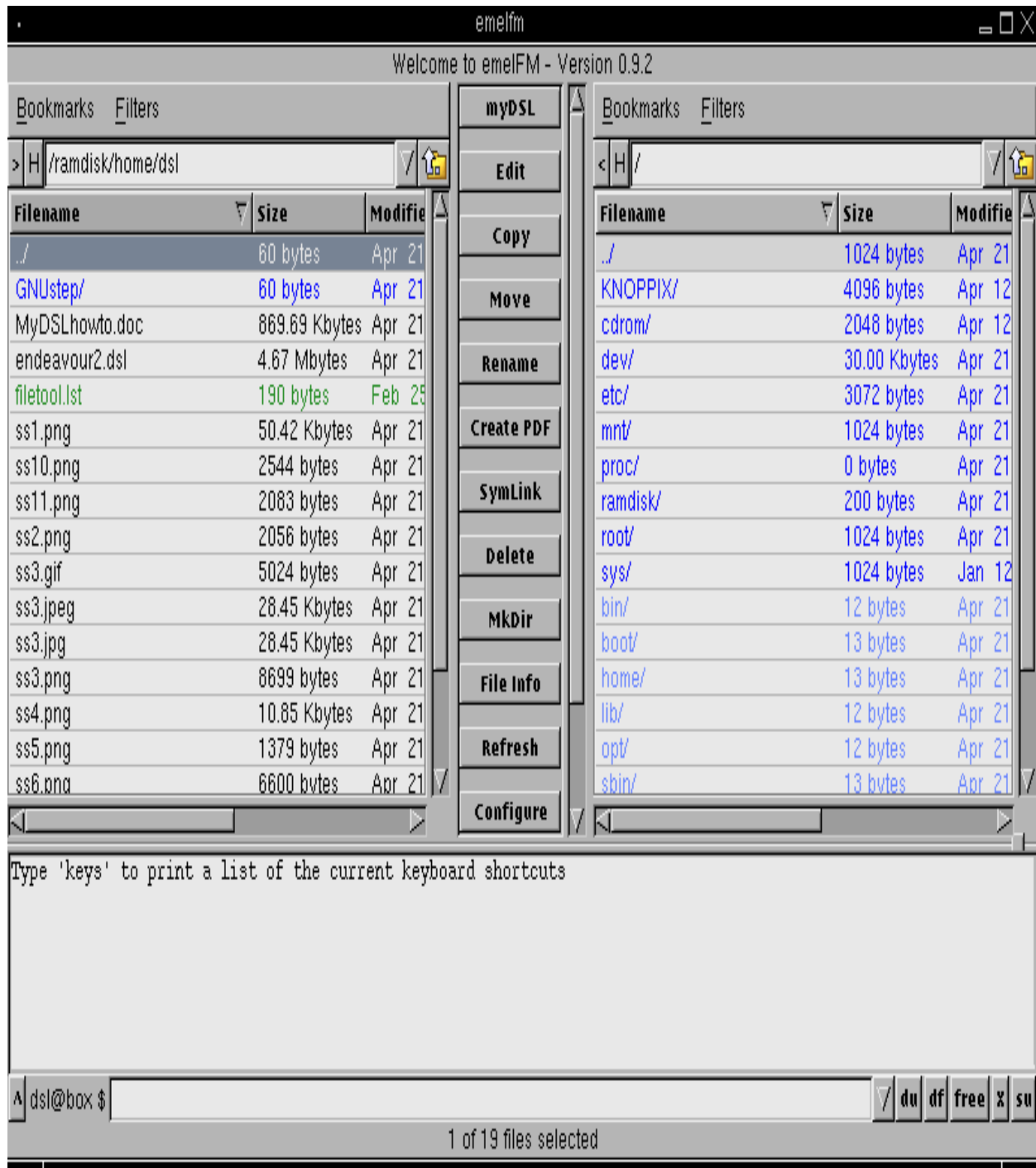
If this is what you have, hit the enter key to start the download of the file.

A terminal window titled "Bash" with standard window controls (minimize, maximize, close) in the top right corner. The terminal shows a root user at a box prompt running the command: `wget http://www.ibiblio.org/pub/Linux/distributions/damnsmall/mydsl_testing/endeavour2.dsl`. The output shows the connection to `www.ibiblio.org[152.2.210.80]:80` and a progress bar for `endeavour2.dsl` at 7% completion. The progress bar is represented by a vertical line with asterisks. To the right of the progress bar, the text `379 KB` and `02:42 ETA` is displayed. A yellow cursor is visible at the end of the `ETA` text. A vertical scrollbar is visible on the left side of the terminal window.

```
root@box:~# wget http://www.ibiblio.org/pub/Linux/distributions/damnsmall/mydsl_
testing/endeavour2.dsl
Connecting to www.ibiblio.org[152.2.210.80]:80
endeavour2.dsl      7% |**                               | 379 KB   02:42 ETA
```

When the progress bar reaches 100% you will see the root prompt. At that point you can close the xterm window.

Now open up the Emelfm filemanager from the desktop icon or the menu.



You should now see the *endeavour.dsl* file in your */home/dsl* directory. To install the file, you simply click on it to highlight and then press the myDSL button at the top of the emelfm button panel. This will install the application so it is ready to use. Check for the menu entry as in our other example.

I hope you found this howto helpful.